



## 2,762 SF Turn-Key Beverly Lab 100 Cummings Center, Suite 464-C

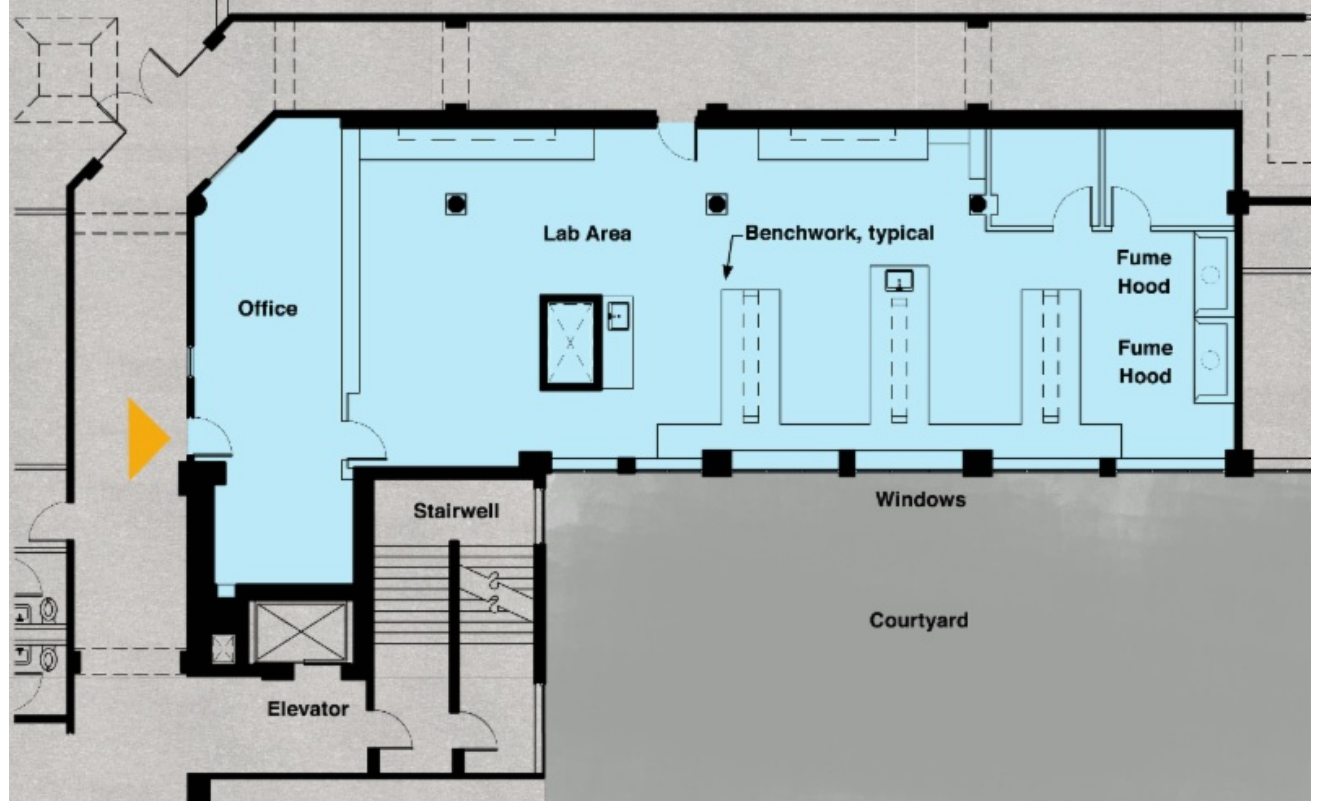


### FEATURES

- Spacious windowed lab facility
- Two six-foot fume hoods with dedicated circuits
- Backflow prevention and acid neutralization tanks
- Easy access to elevator, parking garage, and loading dock

### LIVE. WORK. PLAY.

- The North Shore's premier business address for more than 560 firms
- Picturesque campus offering walking trails, picnic area, and healing garden
- Numerous on-site amenities, including dining, fitness, and entertainment facilities
- Adjacent to Cummings Properties' newest development project, Elliott Landing, a luxury 73-home condominium community



**Printable Floor Plan**



**Contact**

Mary Carroll | 978-720-4015 | [beverlyleasing@cummings.com](mailto:beverlyleasing@cummings.com)

View more spaces for lease on [our website.](#)